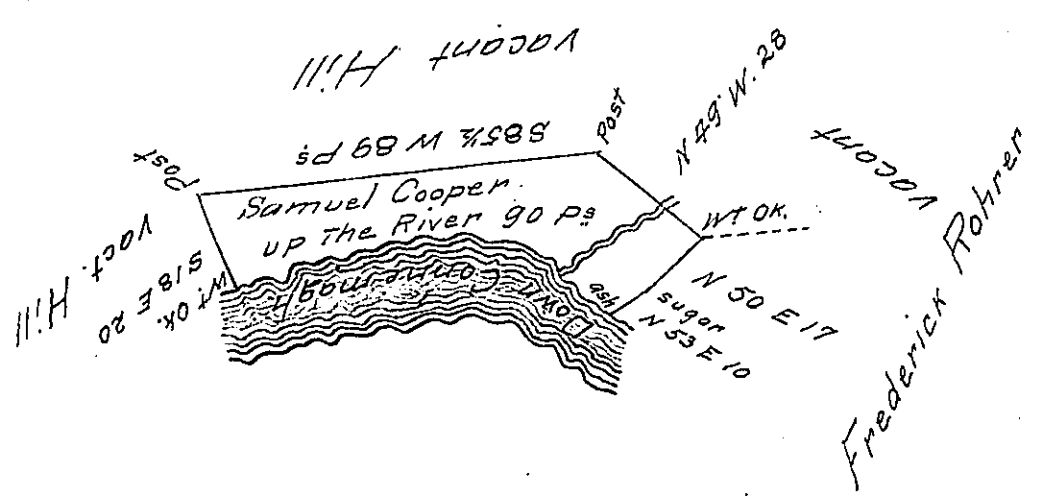


Courses up  
the River  
from Wt OK.

N 72 E 20 Ps  
N 84 E 34 } 90 -  
S 74 E 12  
S 49 E 24 }



Surveyed June 21<sup>st</sup> 1792 for Samuel Cooper a Tract of Land situate in Armstrong Township Westmoreland County adjoining Frederick Rohrer and the North Side of the River Conhemagh containing Eleven Acres and One Hundred and Five Perches and the Allowance of Six p Cent by Virtue of his Warrant dated the 4<sup>th</sup> Day of February 1792

To Daniel Brodhead Esqr Ennon Williams Dep<sup>y</sup>  
Surveyor General of Sur<sup>y</sup>  
Pennsylvania

IN TESTIMONY that the above is a copy of the original remaining on file in the Department of Internal Affairs of Pennsylvania, made conformably to an Act of Assembly approved the 16th day of February, 1833, I have hereunto set my Hand and caused the Seal of said Department to be affixed at Harrisburg, this Twenty-fourth day of June 1908

*Henry Howard*  
Secretary of Internal Affairs.